



th Barometer

Long-term care,
Alzheimer's condition and
care provision : what do
French people have to say ?



fondation@med-alz.org
www.fondation-mederic-alzheimer.org



Fondation Médéric Alzheimer publishes its 4th barometer after Covid and the nursing homes crises.

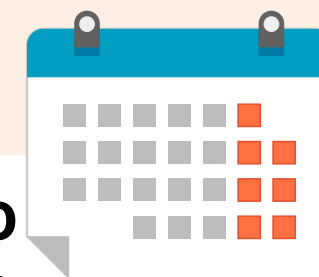
Data analysed in this 4th barometer come from Elders[®] cohort produced by Fondation Médéric Alzheimer and are collected every **3 years** by **KANTAR PUBLIC**.

Data collection



by mail

from March 28th to
June 12th, 2023



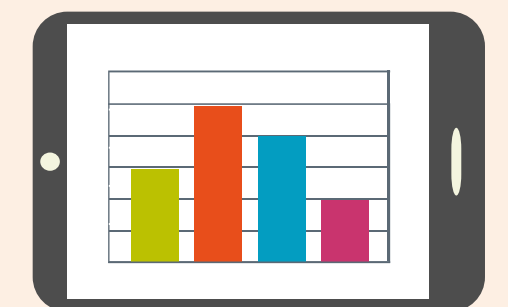
Analyse

Answers of **6,162** interviewees, aged **40 to 79 y.o.**, representative of the French population were collected and are analysed in this barometer.

Weights have been used to improve the representativeness of the final sample (adjusted on sex, age, working status, region, city's size and household's size). They were computed based on administrative data (Insee)

Statistically significant variations compared to 2020 (3th barometer) are highlighted by :

- ↑ for an increase and
- ↓ for a decrease.



Sample selection

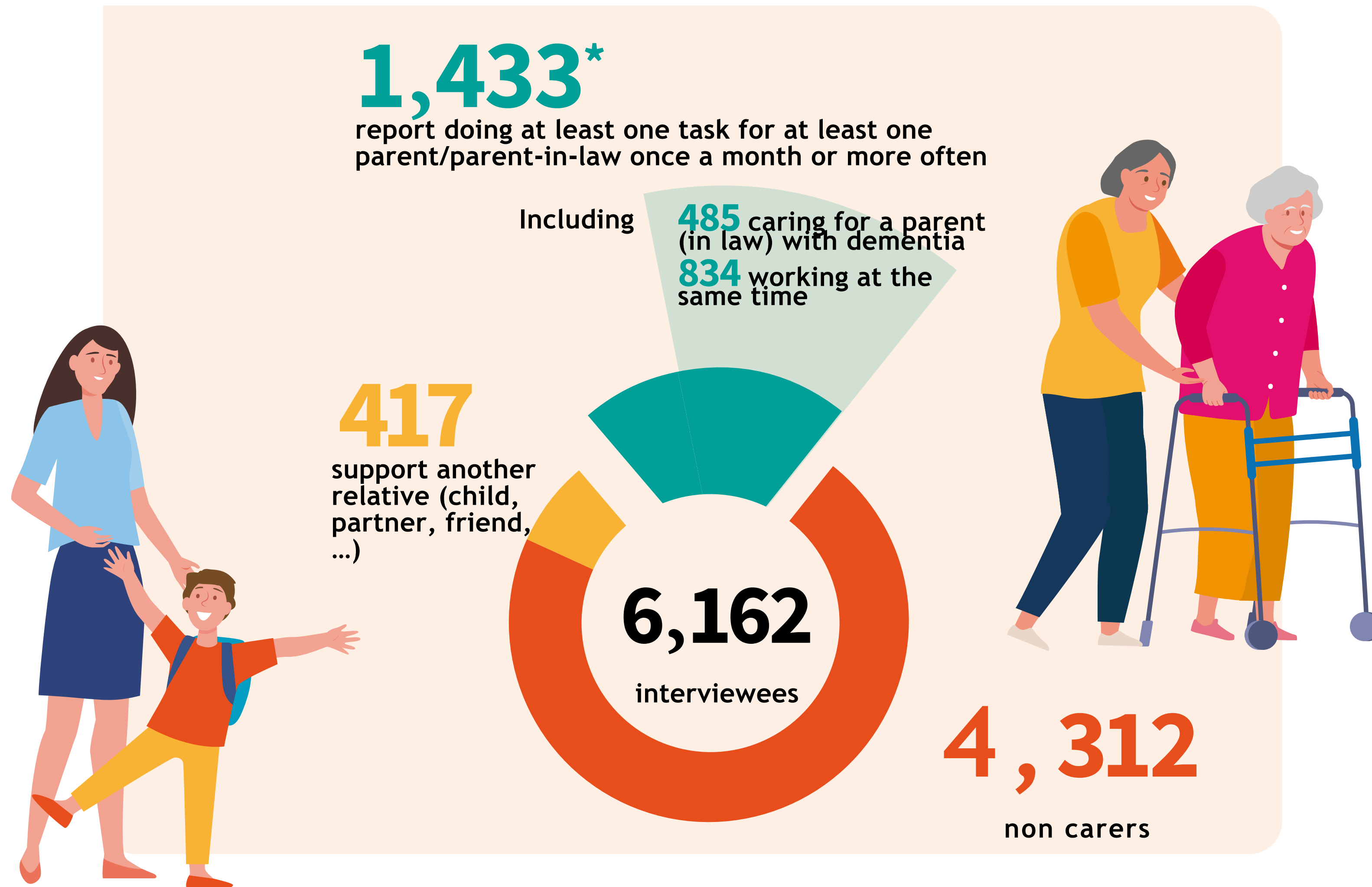
10,000
questionnaires sent



5,457 formers respondents
in a previous wave of Elders[®]
cohort.

4,543 individuals randomly selected using quota sampling to ensure the sample's representativeness of the French population aged 40 to 79 years old at each wave of Elders[®] cohort.

Sample description

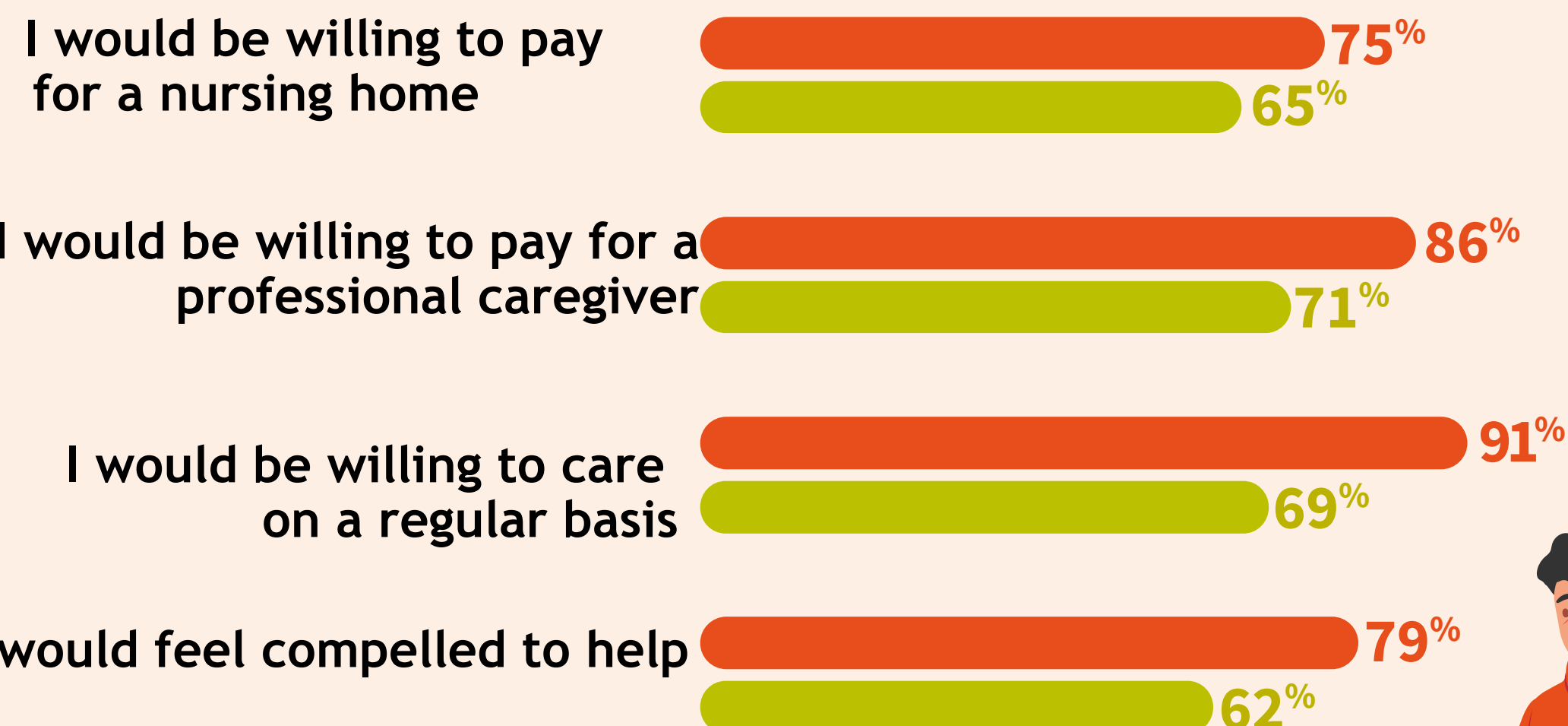


Who is a carer ?

an individual aged **40 to 79 y.o.** who reported doing at least one caring task per month for at least one parent or parent-in-law

* Among these 1,433 carers, some can belong to more than one category. For example, an interviewee working and caring for a parent with dementia belongs to both sub-categories.

The French show solidarity with their loved ones



— caring for a partner
— caring for a parent



Willingness to care for their partner remains more important than for their parent

68% are willing to make changes in their working life to support their partner

42% are willing to make changes in their working life to support a parent

38% are willing to live with their parent if he needs help

but

70% believe that the State should be responsible for caring for the elderly rather than families.

Based on 6,162 respondents, 3,443 respondents with at least one parent alive, 4,093 respondents currently with a couple.



Greater denial of future long-term care needs

Only **47%** consider themselves at risk of needing LTC at **age 80**

A low uptake of anticipation measures

82% do not hold a long-term care insurance

76% have not written any future protection mandate nor advanced directives

In contrast to a desire to protect loved ones

94% do not want to be a financial burden to their children if they need long-term care

76% would prefer to be helped by a professional caregiver rather than a relative if they need long-term care



Alzheimer's perception



27% consider themselves at risk of Alzheimer at **age 80**

32% if they have a relative with dementia

Having a relative with dementia strongly impacts dementia's perceptions

Which word better describes Alzheimer?

Disease **14%**

Dependency **23%**

Irreversible **24%**

Which word describes better your feeling about Alzheimer?

Concern **19%**

Difficulties **34%**

Burden **15%**



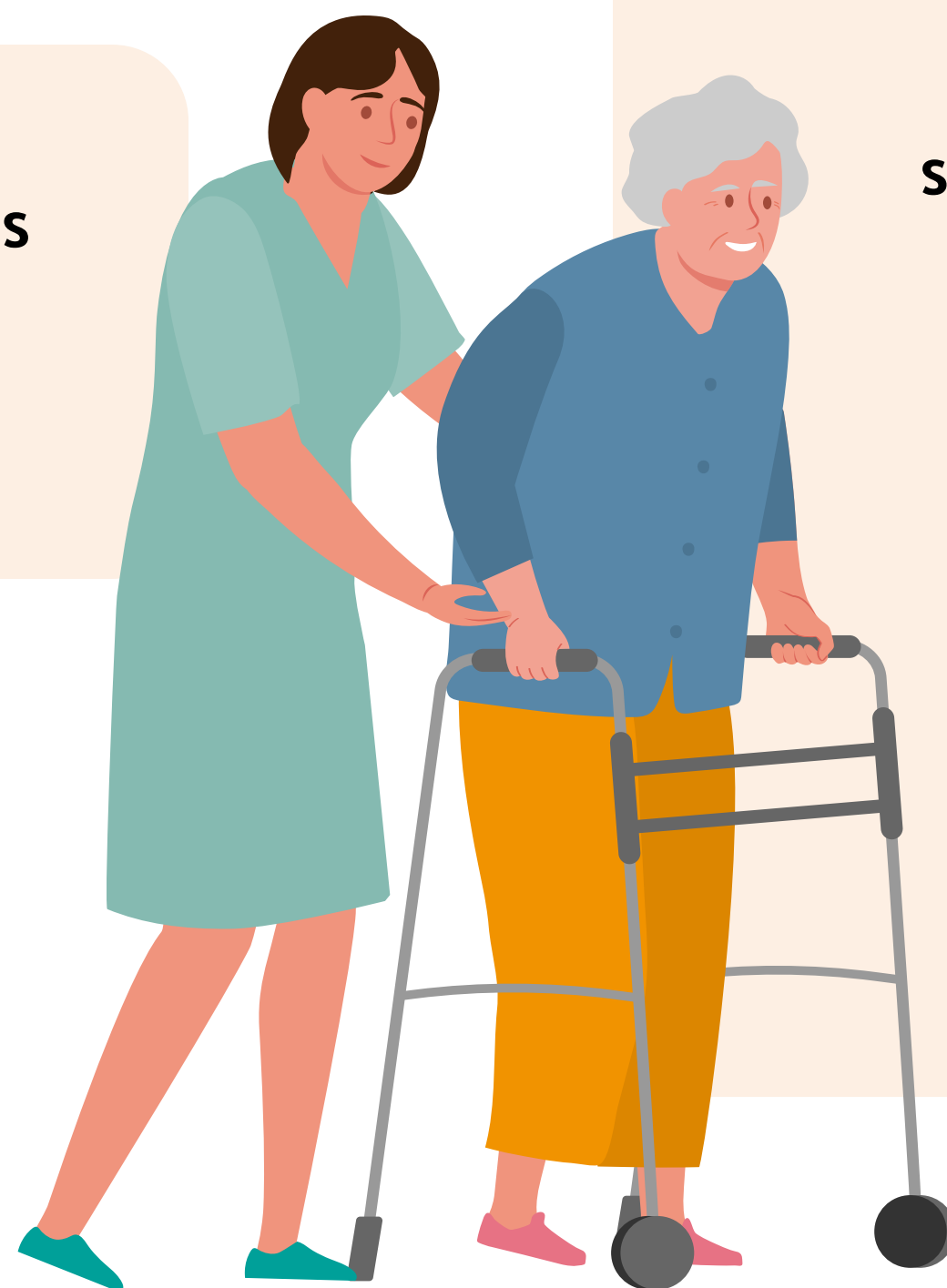
Dementia is part of the French everyday life but is still taboo

1 in 2 French

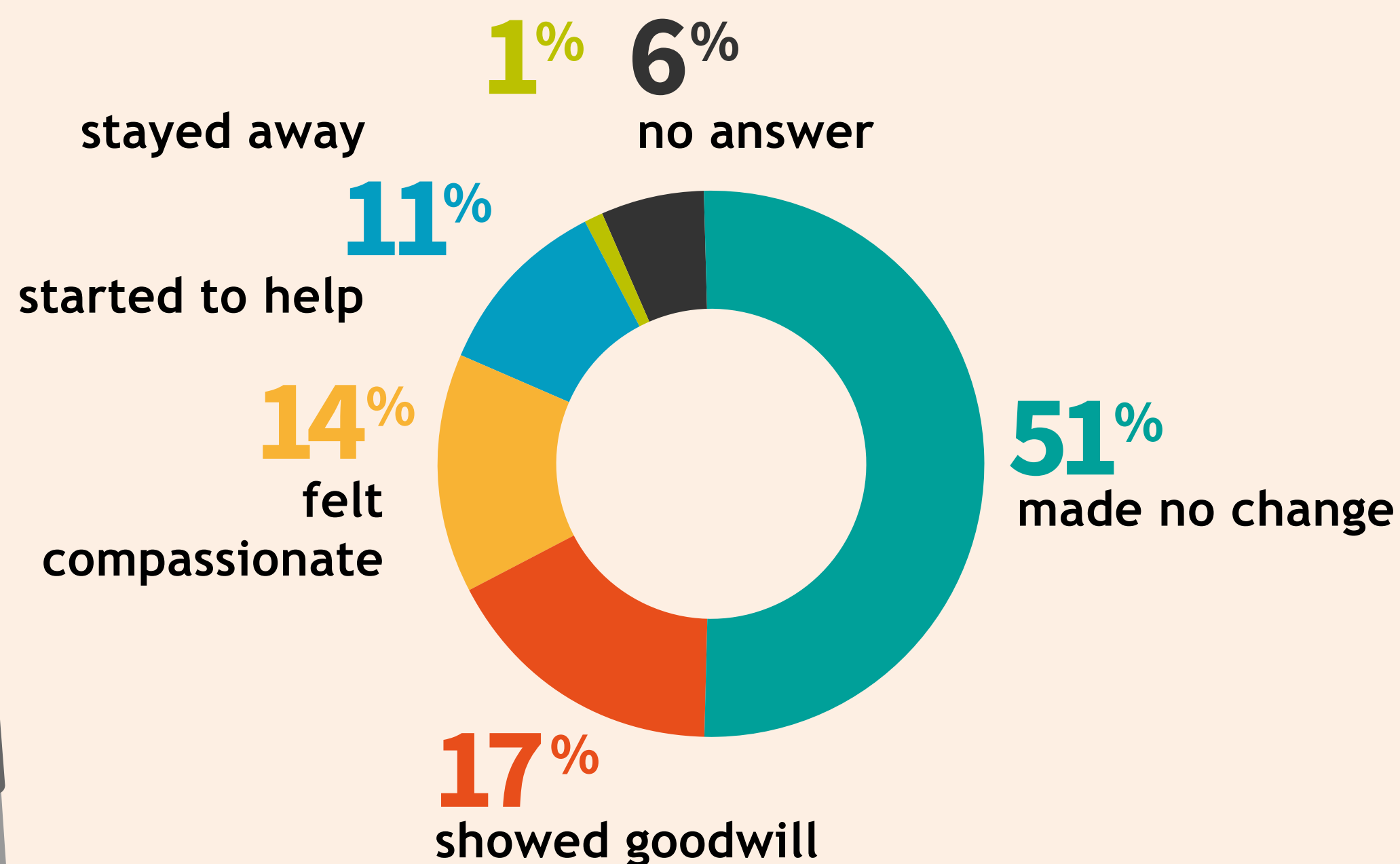
has a relative with dementia

70%

expressed difficulties to talk with their relative about his condition



Various reactions to the diagnosis



Spreading information is still necessary

52% declare themselves enough informed about dementia

63% heard often about it during the last 6 months



Misinformation about public subsidies

1 in 3 French ignores that the public subsidy can pay for a nursing home

1 in 3 French ignores that the public subsidy depends on local institutions

3 in 5 French ignore that the public subsidy can pay for informal care

Portrait of carers

22%

of the French help a parent (in law) at least once a month for groceries, cleaning, organising care...

33%

help a parent with dementia

25%

live in a rural area



Average age is

56 y.o

56% are women

55%

are currently working



A massive lasting help

1 in 2 carers
does at least **4 helping tasks** per month

1 in 3 carers
takes care of at least **2 parents**

1 in 2 carers helps
since at least **3 years**



While some help's characteristics remain stable, help duration has considerably increased.

In 2020, **1 in 2 carers** were helping since at least **2 years**

Help provided to a parent with dementia is more intense

Help description



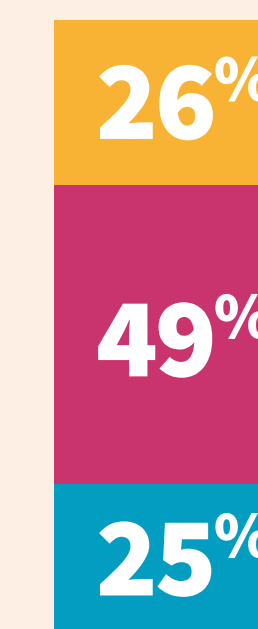
■ Caring for a parent with dementia
■ Caring for a parent

Help frequency

caring for a parent



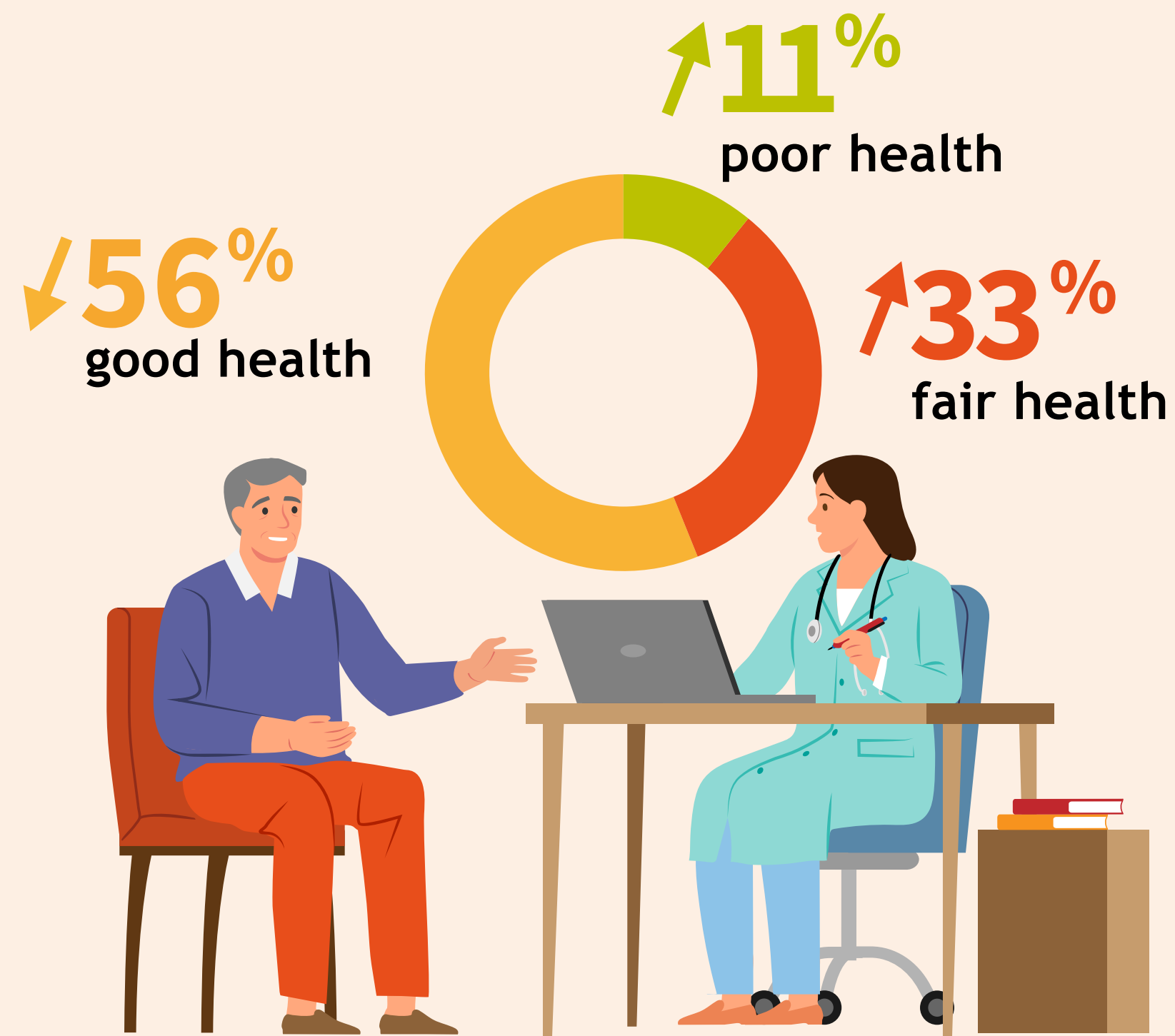
Caring for a parent with dementia



■ Daily
■ Weekly
■ Monthly

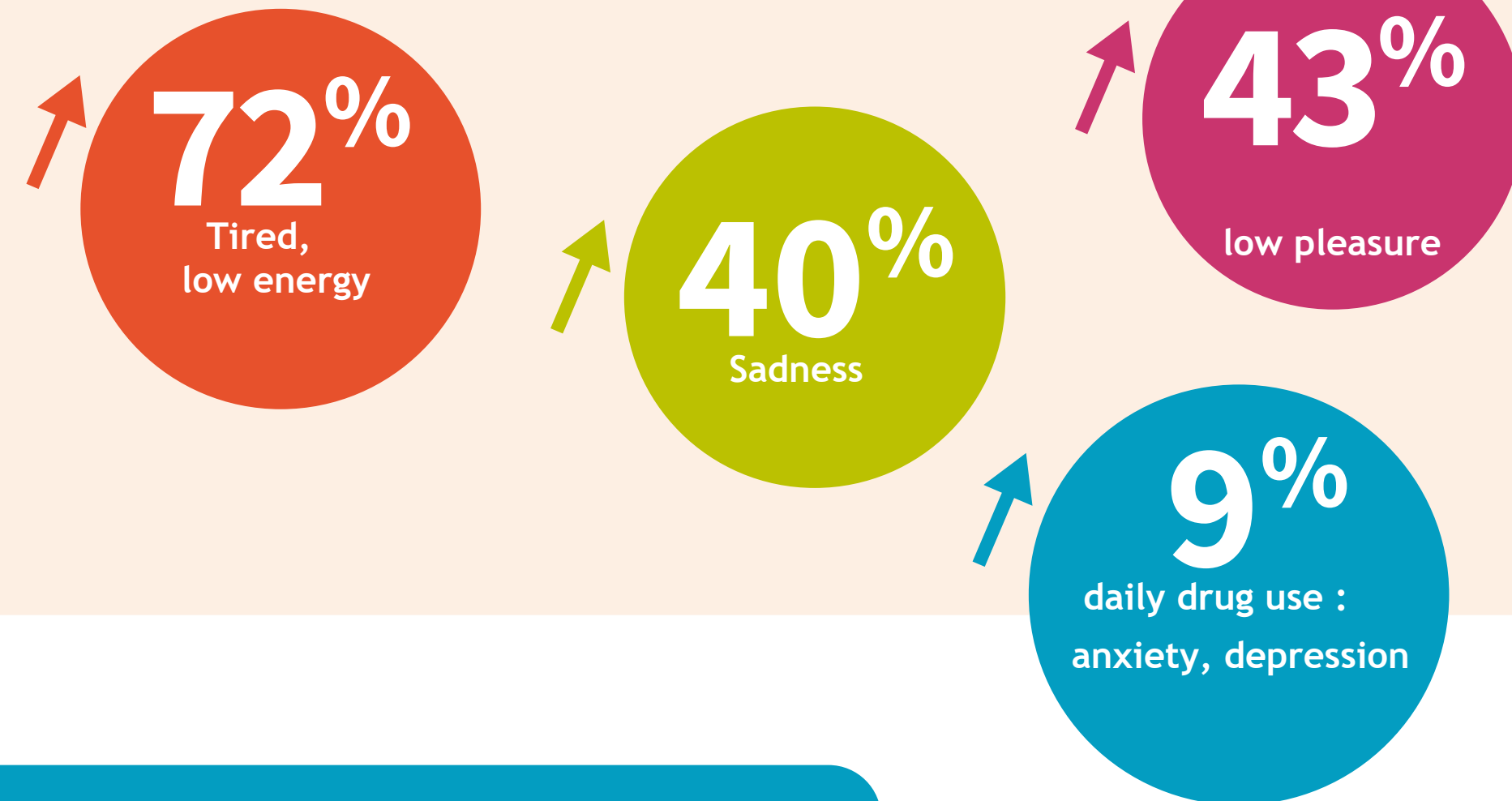
Carers declare themselves in good health but some indicators have to be monitored

Carers declare themselves in



↑21% declare that their overall state of health has deteriorated over the last two years

Indicators to monitor



Health deterioration is even stronger when caring for a parent with dementia

Focus on working carers : a capacity to adapt

Working carers represent 55% of the carers

52% are women

72% live in couple

Average age is **52** y.o.

In average, they have **2** children
aged less than **15** y.o.



↑85% work full-time

↓15% work part-time

A flexible organisation of work

↑9% reorganised their working hours without reducing their working time

↑17% took days off to care
(mostly paid holidays)

Only **43%** do not feel any difficulty in their work/life balance

Focus on working carers : a supportive working environment but...

81%

of French people want more support for working carers

61%

of working respondents see the work environment as having a role to play in informing and raising awareness of long-term care

68%

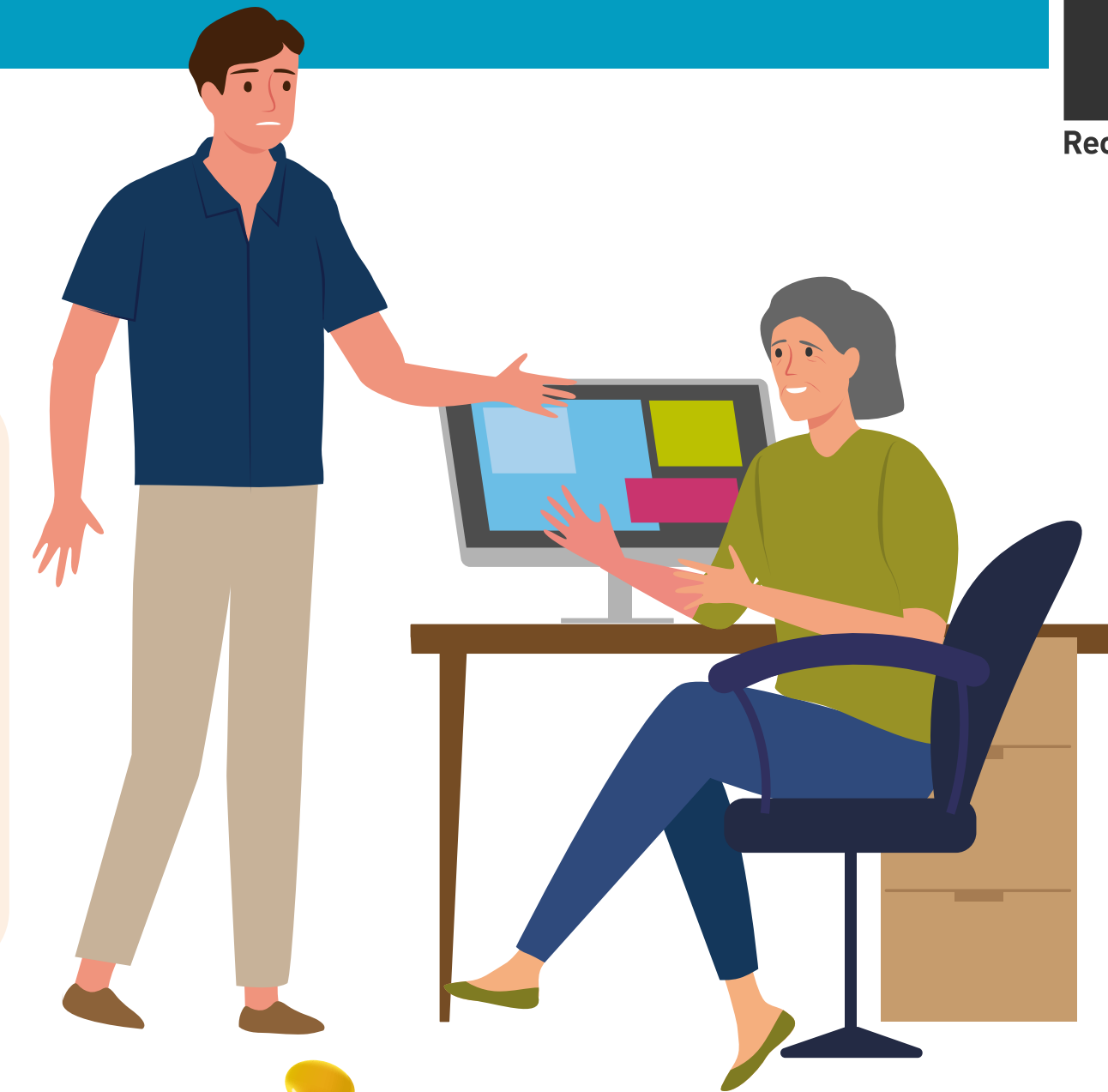
of working carers declare their professional environment as supportive

↓ 11% talked about their situation to their colleagues and

↓ 7% to their manager

67%

would like companies to organise transfer of paid leave between colleagues to support working carers of a parent needing long-term care



Even if the professional environment is perceived as supportive, there has been a deterioration. The spread of work from home has certainly played a role.





e Baromètre



Reconnue d'utilité publique

5, rue des Reculettes
75 013 Paris
01 56 79 17 91

fondation@med-alz.org
fondation-mederic-alzheimer.org

